

An aerial photograph of a lush green landscape. The majority of the frame is filled with vibrant green agricultural fields, divided by thin, light-colored lines representing roads or irrigation canals. In the lower right quadrant, there is a prominent, irregularly shaped island of dense, dark green forest. This forest island is surrounded by the agricultural fields, with a distinct reddish-brown dirt path or boundary line separating it from the surrounding land. The overall scene suggests a contrast between natural ecosystems and human-managed land use.

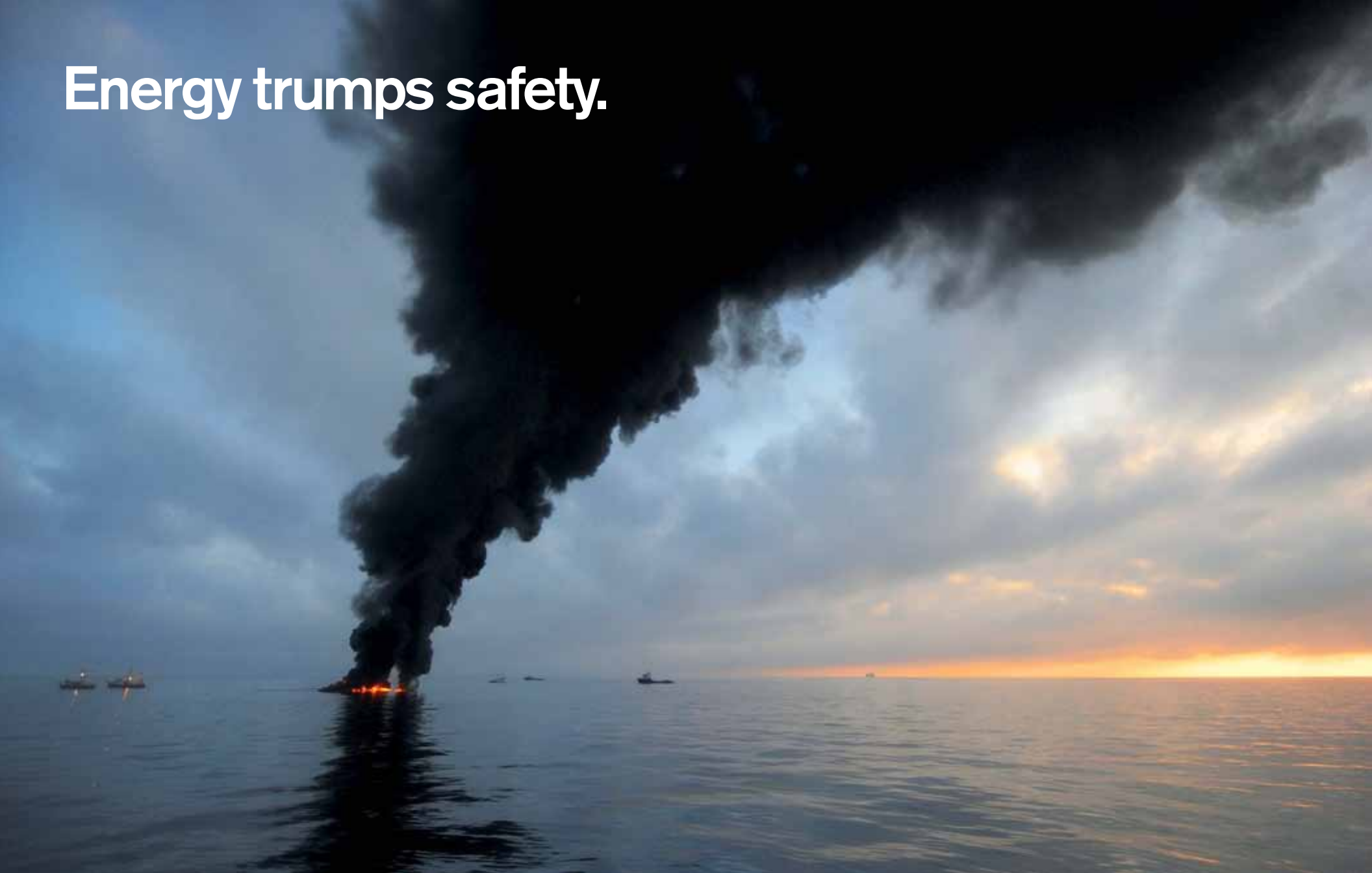
What happens when an infinite-growth economy runs into a finite planet?

Global Footprint Network
2011 Annual Report

Debt boils over.



Energy trumps safety.



The majority is left out.



Biodiversity is for sale.



Food turns into a luxury.



People rise up.



Resource constraints
have not been solely
responsible for recent
events, but they've
played a central role.

As resource pressures increase and our populations expand, countries compete with one another in an auction for Earth's limited biocapacity.

**Global Footprint
Network is helping
nations succeed
by offering informed
choices in a resource-
constrained world.**



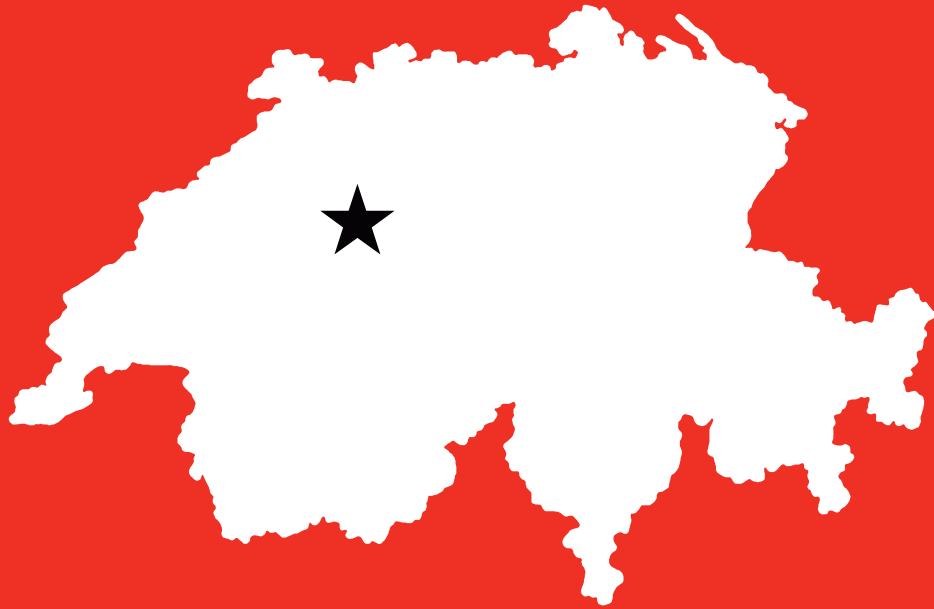
The Philippines is on track to adopt the Ecological Footprint at the national level.

The Philippines builds momentum: Last year, the government began exploring ways to incorporate the Ecological Footprint into its proposed National Land Use Act for 2012. The legislation, a comprehensive national land-use policy, will protect areas from haphazard development and plan for the country's use and management of its physical resources. The government will continue to work with Global Footprint Network in 2012 to make the Philippines the first country in Southeast Asia to adopt the Footprint at the national level.

Costa Rica has featured the Footprint in its State of the Nation report.



Footprint data debut: The Ecological Footprint and biocapacity data for Costa Rica were included for the first time in the country's annual State of the Nation report, an overview of national social, economic, environmental and political issues. In it, Steffan Gómez, the report's chief researcher, attributed the country's growing Footprint to its increased consumption and pollution.



Switzerland has made the Ecological Footprint an official indicator.

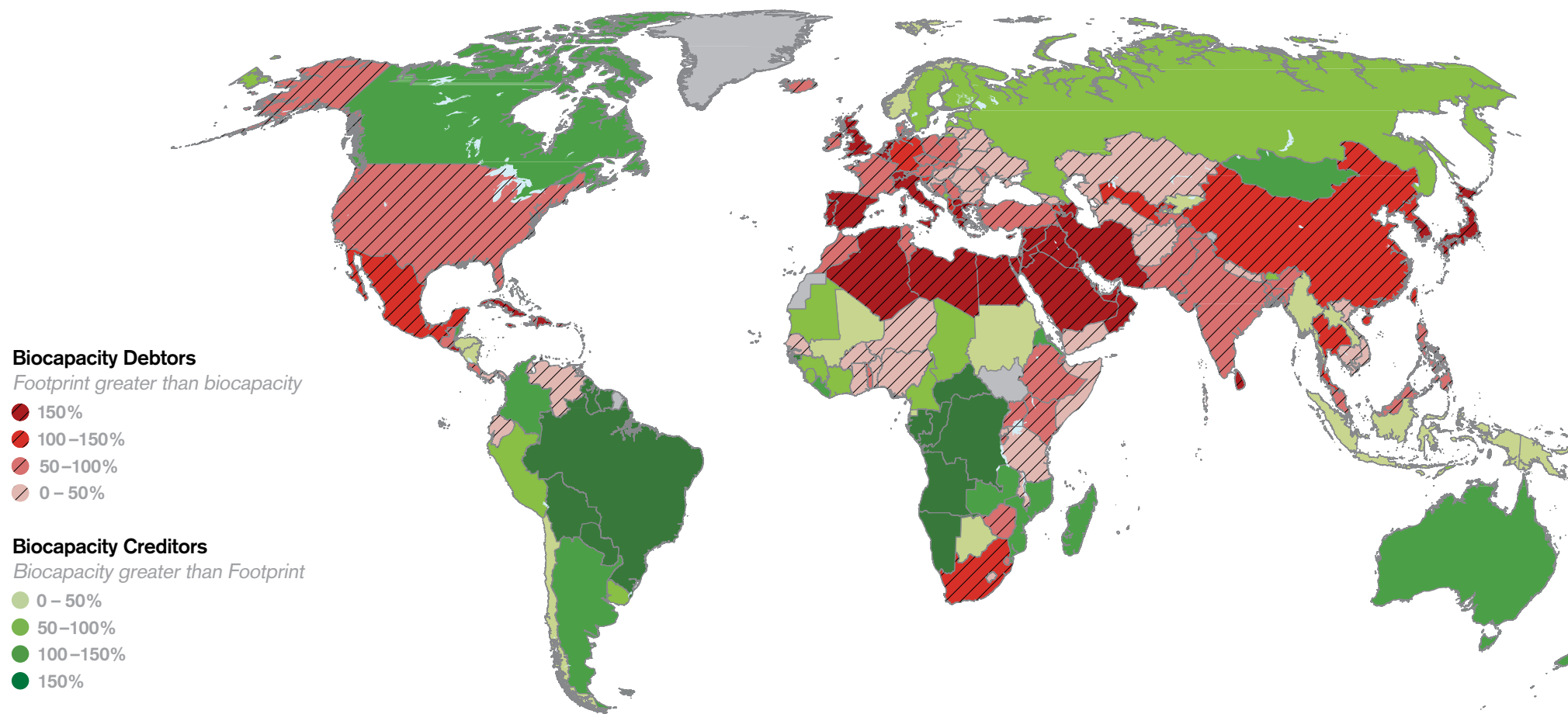
Footprint in Swiss statistics: The Ecological Footprint is an indicator in Switzerland's sustainable development monitoring system, and is published annually by the Swiss Federal Statistical Office. The Federal Office of Spatial Development and the Statistical Office are using the Footprint in the Swiss government's "Sustainable Development Report 2012" launched at Rio+20. The report documents that Swiss residents consume three times more biocapacity than is available per person worldwide.

**Nations that manage
their use of ecological
assets increase their
chances of economic
success.**



The Ecological Wealth of Nations

As global ecological overshoot grows, how will countries continue to meet the needs of their people and their economies? Maintaining natural wealth and reducing ecological demand will help countries improve economic resilience and human well-being.



Founders' Letter:
Like never before,
our world is being
shaped by ecological
constraints. Yet few
countries track their
supply of and demand
for natural capital
with the same resolve
that they track
financial indicators.
Doing so is a matter
of self-interest.

More than 25 years into ecological overshoot, we are now entering the storm. In the last ten years, we've seen three- to fourfold increases in food and energy prices. These pressures translate into stifling costs for many countries, impacting their security and the well-being of their people.

Our analyses show that the recent financial turmoil in Greece, Italy and elsewhere was fueled, in large part, by rising resource costs. In the Middle East and North Africa, repression, unemployment, rising prices and other pressures drove people into the streets, leading to the toppling of authoritarian governments. Ultimately, though, these countries will need to grapple with a systemic problem: The gap between resource supply and growing demand that will impose increasing burdens on their economies.

For lasting competitiveness, countries need a break with the past. The good news is that addressing resource risks can open up economic opportunities and advance social equity. The solutions lay in better understanding the choices before us. For this, governments need the knowledge and tools to manage their ecological assets as well as their resource demand.

Our National Footprint Accounts are the gold standard for measuring key aspects of a country's ecological wealth and vulnerabilities. It's what makes Global Footprint Network unique. We're proud of the momentum we've built around the globe, and as we prepare to celebrate our 10th anniversary, we remain committed to creating a systemic shift in how nations invest in and plan their futures. Because preparing for a resource-constrained world is, after all, in the self-interest of every country.

Warm regards,

Mathis Wackernagel *Susan Burns*

Mathis Wackernagel
President
and Co-founder

Susan Burns
Senior Vice President
and Co-founder



From adoption to action.

In 2005, **Global Footprint Network** launched a campaign with the goal of institutionalizing the Ecological Footprint in at least ten nations by 2015. More than 50 nations have engaged with the organization directly and 17 have completed reviews of the Footprint. Japan, Switzerland, UAE, Ecuador, Finland, Latvia, Luxembourg, Scotland, and Wales have formally adopted it.

| | PHASE I | PHASE II | PHASE III | PHASE IV | PHASE V |
|-----------------------------|---------------|----------|-----------|--------------|---------------|
| | Relationships | Review | Adoption | Goal-setting | Policy Shifts |
| Belgium | | | | | |
| Canada | | | | | |
| Community of Andean Nations | | | | | |
| Colombia | | | | | |
| Czech Republic | | | | | |
| Ecuador | | | | | |
| European Commission | | | | | |
| Finland | | | | | |
| France | | | | | |
| Germany | | | | | |
| Indonesia | | | | | |
| Ireland | | | | | |
| Japan | | | | | |
| Latvia | | | | | |
| Luxembourg | | | | | |
| New Zealand | | | | | |
| Scotland | | | | | |
| Spain | | | | | |
| Switzerland | | | | | |
| UAE | | | | | |
| United Kingdom* | | | | | |
| Wales | | | | | |

*The U.K. government has not formally adopted the Footprint. However, Wales, Scotland and municipalities all over the U.K. have, leading to an abundance of policy shifts.

Sound resource
management means
building wealth and
preserving assets
rather than liquidating
them to boost GDP.



Every business tracks its revenue and expenditure. Ignoring either would be foolhardy.
With economic success ever more dependent on limited natural resources, nations too need an accounting system to understand nature's budget. The National Footprint Accounts fill this gap.

Ecological Footprint accounts reveal how much land and water area a human population requires to produce the resources it consumes and to absorb its waste. They also track how much productive area—or biocapacity—is available.

Global Footprint Network's unique National Footprint Accounts form our central data set and are what sets us apart. Based on official statistics published by the United Nations and other international agencies, the Accounts track national production, consumption, exports and imports for 232 countries and territories, starting in 1961, using about 6,000 data points per country and year.

Results vary year to year, but one overarching trend has persisted for decades: Global ecological overshoot continues to grow. Because of its important implications for economic and social well-being, central banks, corporations, and finance, planning and environmental ministries are asking us to help them understand how to invest in the future. The National Footprint Accounts and related tools allow our clients and partners to run scenarios, track the speed and scale of resource and population trends, perform trade analyses and understand the demand placed on ecosystems by key economic sectors, providing them with the intelligence they need to reduce risks and seize opportunities.

Banks want to understand government bond risks that agencies like S&P and Moody's don't yet account for. Ministries and central banks seek to understand their nations' opportunities and risks in order to remain competitive. Foundations and development agencies want to know they are investing in ways that advance human well-being while not depleting the ecological assets needed to sustain development.

Our overarching goal is to help make better decisions—shifting our individual choices, institutions' investments and government policies toward those that offer nations greater security and produce a sustainable world.

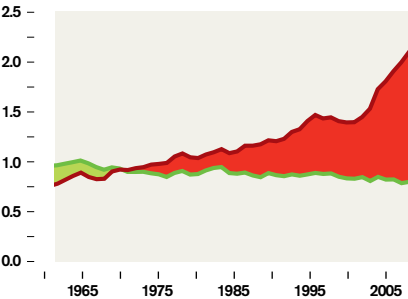
Biocapacity is the currency of the future and it's one backed by real assets. The leaders who understand their countries' resource needs, limits and dependencies will be better positioned to support their citizens' prosperity.

National Footprint Accounts

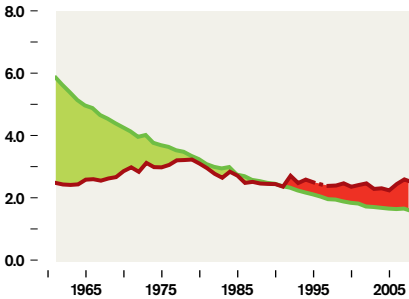
(Global hectares per capita)

National Footprint Accounts measure availability of and demand on biocapacity, using approximately 6,000 data points per country, per year. Below are eight examples from the 232 countries and territories tracked in the Accounts. They show the countries' paths from 1961 to the present.

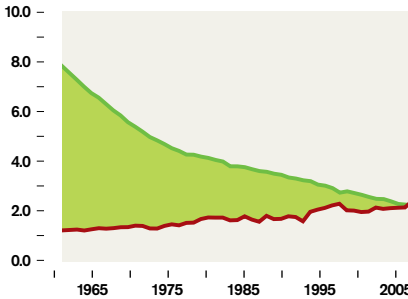
- Footprint
- Biocapacity
- Biocapacity deficit
- Biocapacity reserve



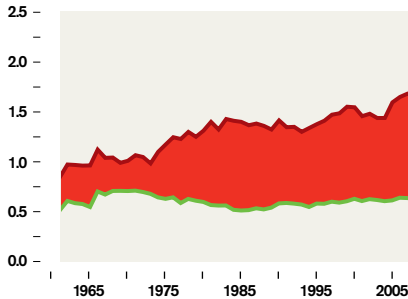
China



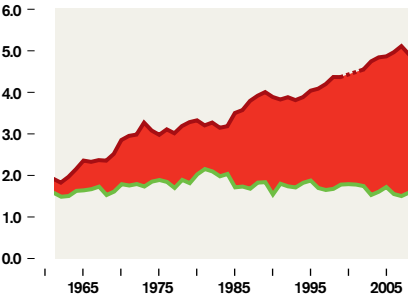
Costa Rica



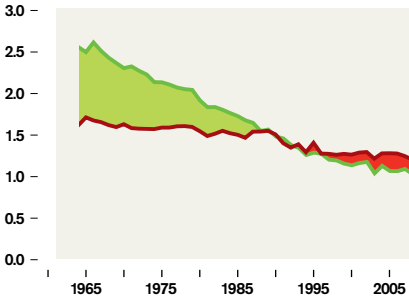
Ecuador



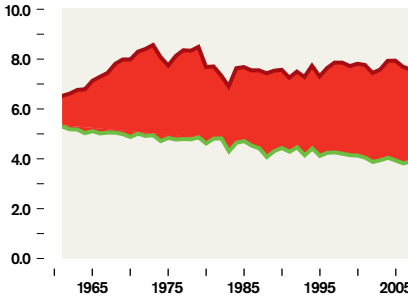
Egypt



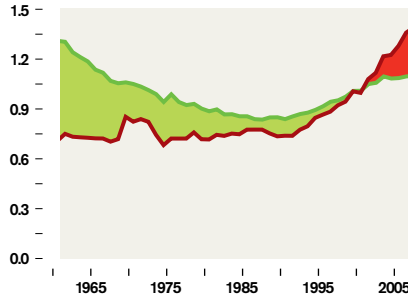
Greece



Tanzania



United States



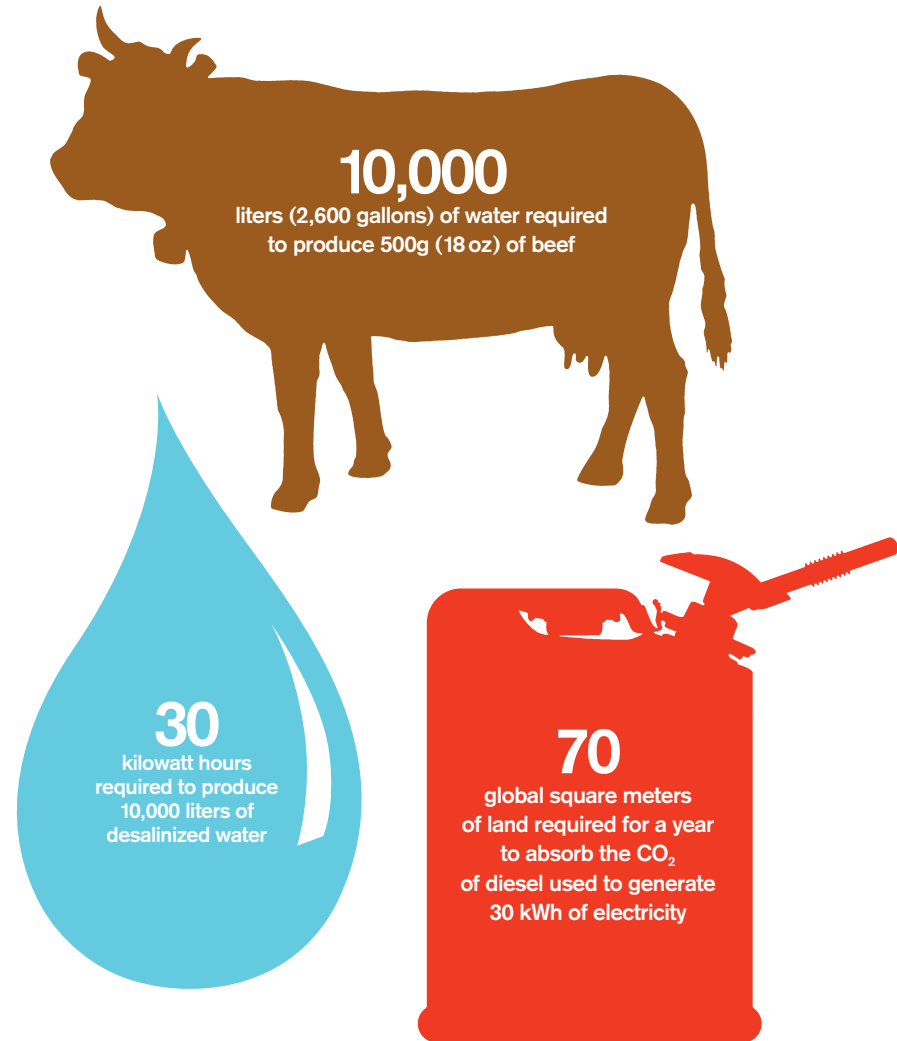
Vietnam

In a growing number of countries, water is becoming more precious than cash.



Energy, food security and water are linked.

A solution for one will impact another. Producing more food or energy requires more water. Water options, such as desalination, require more energy. How countries solve this and other puzzles will determine their economic success.

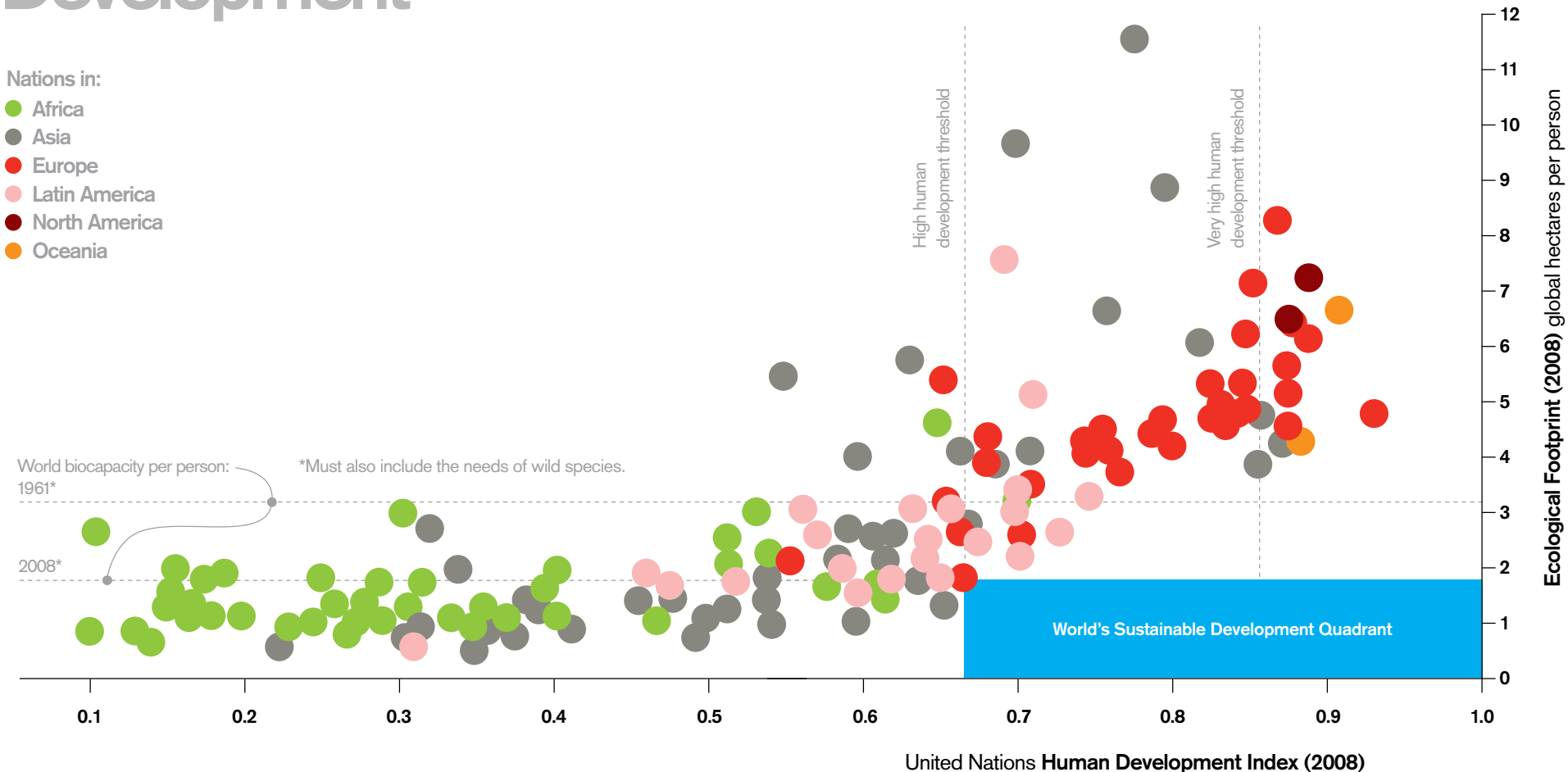



**Sustainable human
development occurs
when everyone can
have fulfilling lives
within the means of
one planet.**



Ecological Footprint and Human Development

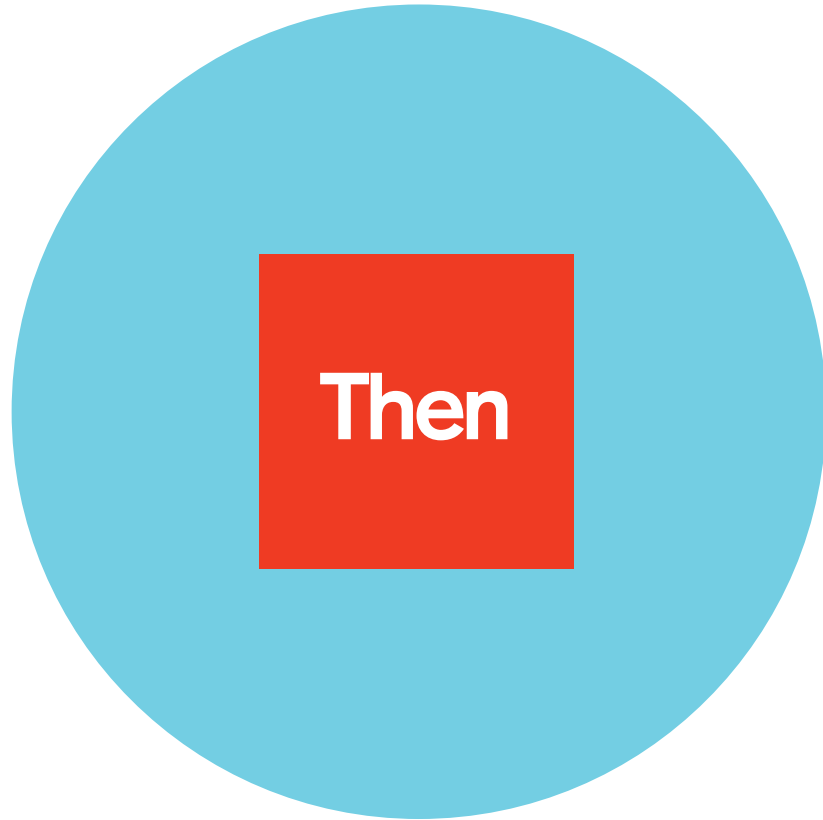
A low average Ecological Footprint and high score on the UN Human Development Index are the minimum conditions for global sustainable human development. By learning to “think inside the (blue) box,” we can strive toward a world where everyone lives well, within the means of one planet. At Global Footprint Network, we believe this is humanity’s shared goal.



An aerial photograph showing a large-scale oil spill in the ocean. Two containment vessels, one red and one white, are positioned on the left side of the frame, connected by long, dark containment booms that stretch across the water. The oil spill itself is a massive, irregular area of dark, viscous material, appearing in shades of black, dark blue, and brown, contrasting sharply with the surrounding deep blue water. The text "Nations ignore the link between resource constraints and their economies at their own peril." is overlaid in white on the upper right portion of the image.

Nations ignore the link between resource constraints and their economies at their own peril.

The rules of the game have changed.



An empty world allows for unlimited production of goods.

■ Economy
● Biosphere

In the past, seemingly unlimited resources fueled our economies. But humanity now demands over 50 percent more than what the planet can regenerate. We have entered a global auction, with more people bidding for fewer resources. In this world, managing our use of natural capital — and not overusing it—is the recipe for economic success.



A full world turns the economy into a global auction.



Debt boils over. One of the hidden drivers behind Europe's financial turmoil is the dramatic increase in resource prices over the last 10 years. Historically, cheap resources have helped fuel economic growth, but the situation has now changed. Increasing costs impose a burden on economic performance that is often reflected in rising debt levels. This, at a time when the ability of many countries to service this debt is being called into question.

Energy trumps safety. Petroleum is becoming more difficult and costly to extract. But since our economies remain dependent on fossil fuels, we are taking greater risks to acquire it. Increasing demand, coupled with declining supplies, is leading to volatility and higher prices, characteristic of what some economists refer to as "peak oil." Even the conservative International Energy Agency has acknowledged that oil production may peak in a decade's time.

The majority is left out. As prices rise, many countries must spend larger portions of their budgets on essential resources from abroad, often forgoing expenditures on health, education, infrastructure or other productive capacity building. People find it more difficult to make ends meet. The socio-economic impact of ecological overshoot, including climate change, disproportionately affects the most vulnerable.



Biodiversity is for sale. The threats facing plant and animal life on the planet are greater than at any time in recorded history. Human pressure in the form of overharvesting and habitat loss is driving down wildlife populations worldwide. In our economic system, wild species have little value. As long as trees, for example, are worth more cut than they are standing, the pressures to liquidate natural resources will be overwhelming.

Food turns into a luxury. Soil erosion, rising fertilizer prices, and severe weather brought on by climate change have all contributed to the volatility of crop yields and food prices. This is particularly harsh in countries where most people depend on basic foods, such as unrefined grains and rice, which are more directly linked to global commodity prices than are the refined foods found in supermarkets.

People rise up. In 2010 and 2011, people across the Arab world rose up against oppression and deprivation. But after the celebration of hard-earned victories, many countries will continue to face systemic challenges due to food insecurity, demographic trends, and water scarcity. Securing the future will depend on changes in the coming years to national policy that include resource limits and demographic trends as central considerations.

Though resource
and population
trends have
tremendous inertia,
**we believe they
can be reversed.**

Partners from all levels of society are critical if we are to change direction.

With a mission like ending overshoot, we know we can't do it alone.

Strong, strategic partners around the globe have played a crucial role in building awareness about the Ecological Footprint, and applying the data in innovative ways. In 2011, Global Footprint Network enjoyed the support and collaboration of 76 partners in 29 countries. With new partners, such as ALISOS, which helped introduce our work at the government level in South America, and long-time partners, such as Sarasin Bank and the British Colombia Institute of Technology, we continue to challenge prevailing assumptions—and traditional indicators—of a country's wealth. This year we highlight partners who have shown leadership in bringing resource limits to the core of decision-making—from corporate, to government and to finance.

Examples of our partners' work:

United Kingdom | Best Foot Forward Best Foot Forward has helped more than 100 organizations measure, manage and reduce their environmental impacts. BFF's Product Portfolio Footprinting offers a time- and cost-effective complement to life-cycle analysis for assessing the use of resources in corporate supply chains, helping companies to identify and remove inefficient and unsustainable resource-use for the purpose of financial and environmental savings.

Brazil | ecosSISTEMAS The environmental consulting firm ecosSISTEMAS is working to make the Ecological Footprint an official indicator for Brazil. Ecos-SISTEMAS partnered with Global Footprint Network and WWF to calculate the Footprint of Campo Grande, the capital of Mato Grosso do Sul. The project validated the Footprint as a critical tool for assisting local government, civil society organizations, and universities to plan sustainable development.

Australia | The Footprint Company The Footprint Company's life cycle ecological, carbon and water Footprint calculators reduce the cost and complexity of assessing the sustainability performance of buildings and materials for the property industry. The Footprint Company is helping a number of major property owners, developers, and designers to reduce the ecological impact of retail and office development in a commercially productive way.

Switzerland | Bank Sarasin Bank Sarasin won two prizes at the 2011 Sustainable City Awards in London for its innovative financial analysis using the Ecological Footprint to measure credit risk in assessing government bonds. Bank Sarasin's country bond ratings shift the way investors evaluate sovereign bonds—and the way governments think about their own ecological balance sheets.

76 partners in 29 countries working to achieve large-scale change.

Academic Institutions Agrocampus Ouest Rennes — France / BRASS at Cardiff University / British Columbia Institute of Technology / CERAG / Center for the Advancement of the Steady State Economy / Charles University Environment Center / Corvinus University of Budapest / Ecole Nationale Supérieure des Mines de Saint-Etienne / GIDR—Gujarat Institute for Development Research / Instituto Jatobás / Instituto Nacional de Tecnología Industrial / Pontificia Universidad Católica del Perú — Peru / Sentido Verde – Colombia / SERI — Sustainable Europe Research Institute / University of Genoa / University of Siena — Ecodynamics Group

Government Agencies AGEDI — Abu Dhabi Global Environmental Data Initiative / City of Calgary / EPA Victoria / Finnish Ministry of Environment / ICLEI Local Governments for Sustainability / Welsh Assembly Government / Zero Waste South Australia

Corporations Bank Sarasin & Co. Ltd / Barilla G.e R. Fratelli S.p.A. / Confederation of Indian Industry / Info Grafik / Pictet Asset Management SA / Portfolio 21 Investments, Inc. / RECYCLA Chile

Consultancies Agenda 21 Consulting / Ambiente Italia / Best Foot Forward, Ltd / Carbon Decisions / CESTRAS / Centro Nacional de Consultoría S.A / Dandelion Environmental Consulting / EcoRes / Ecosistemas Design Ecológico / Ecomark / EcoSTEPS / The Footprint Company / Libelula Comunicacion / Natural Logic, Inc. / Pal Moses Consultancy / Paul Wermer Sustainability Consulting

NGOs AASHE — Association for the Advancement of Sustainability in Higher Education / AGIR 21 / ALISOS — Alianzas para la Sostenibilidad / Association with Innovation for Sustainable Development / BioRegional Development Group / CELF — Children's Environmental Literacy Foundation / Dutch Footprint Group — Werkgroep Voetafdruk Nederland / Earth Day Network / Eco-Norfolk Foundation / EcoLife / Emirates Environmental Group / Emirates Wildlife Society / Estudio MC / Foundation for Global Sustainability / Fundacion Amigos de la Naturaleza / IRES Piemonte / KOVET Association for Sustainable Economies / New Economics Foundation / One Earth Initiative / Platform Footprint / Population Matters / Pronatura Mexico / The Cloud Institute for Sustainability Education / The Natural Step International / The Sustainable Scale Project / The Web of Hope / Utah Population and Environment Coalition / WWF / Water Footprint Network

Our supporters: selected donor profiles.

When I was working on the earliest environmental conventions to protect ecosystems, it was clear that to succeed we had to bring back nature into people's minds and hearts. But in spite of our efforts, and impressive successes, we have not succeeded enough.

Ecosystems are becoming ever more strained, yet we run our economies as if it doesn't matter. This is why I am so taken by the simple yet powerful approach the Ecological Footprint offers any of us, from young people all the way to finance ministers. This is why I believe in Global Footprint Network's work, and invite you to join it.

Dr. Luc Hoffmann
*Co-founder, WWF,
and President Emeritus,
MAVA Foundation*

Living beyond our ecological means is not something that just "environmentalists" track. We are more and more convinced that the long-term competitiveness of countries is heavily impacted by their balance—or rather, by the imbalances—of what resources they can regenerate each year within their national borders, and what they use in the same time frame.

My wife, Mary, and I think it is important to support an organization which is on the forefront of bringing to light our resource crunch, and which develops strategies to change our consumption patterns and uses of scarce natural resources.

Terry Vogt
*Board Chair, Global Footprint
Network, and Managing Director,
Terra Global Capital*

Through the Living Planet Report, WWF and Global Footprint Network have created a tremendous communications platform. Our combined indices—the Living Planet Index and the Ecological Footprint—track one another almost precisely in opposite directions: As the Ecological Footprint climbs, species numbers nosedive.

Putting together these facts and figures in a way to explain complex phenomena simply is the basis of our storytelling, and our ability to help bring policy change. As we strengthen our partnership, we will strive to achieve our complementary missions: To create a world in which humans live in harmony with nature, and a world where everyone can live well, within the means of one planet.

Tony Long
Board Member, Global Footprint



Clockwise from top left:
**Luc Hoffman, Terry Vogt
and Tony Long**

Thank you for your generous donations.

(Received January 1, 2011 – December 31, 2011)

Foundations Avina Stiftung / med Arthur und Estella Hirzel-Callegari Stiftung / Environment Agency – Abu Dhabi / Flora Family Foundation / Foundation for Global Community / Karl Mayer Stiftung / MAVA — Fondation pour la Protection de la Nature / Mental Insight Foundation / Skoll Foundation / Stiftung ProCare / VIVA Trust / Winslow Foundation / Zayed International Prize for the Environment

Donors Grant D. Abert / Knecht and Müller AG / RVR Service AG / Geoffrey Ainscow / Barbara and Donald Aitken / Vinit Allen / Helen Ampt / Peter Andres / Ray C. Anderson Foundation / Anonymous (5) / Victoria Ayres / Margrit and Frank Balmer-Leupold / Kyoko Watanabe and Hank Bannister / John Barnes / Agnes Bayatti-Ozdemir / Gene Bazan / Warren Bell / Chela Blitt / Jacques van Bokhoven / Carlos Eduardo Lessa Brandão / Julie Brewer / Hal Brill / Paolo Brunello / Teodora and Ulrich Buck-Tomasevic / Ann E. Burke and Robert A. Herendeen / Lilian and Michael Burkhard / Rosemarie and Max Burkhard-Schindler / Vicki Burkhard / Annemarie Burkhardt / Barbara and Urs Burckhardt / Baumann and Cie / Burkhard Consulting Services / Miles C. Burns / Jack Byrne / Frijtof Capra / Duncan Castle / Elena Cavagnaro / Simon Cavendish / Donald

Chisholm / Dora Christ-Viret / John Cobb / John B Cobb Jr / Kristin Cobble / Carlos Coello / Aimee Merrill and Daniel Cardozo / Erin Claybaugh / Rob Cross / Julie Curry / Nona Dennis / Martin P Desvaux / Sally and Mark Dimaggio / Robert Dimiceli and Andrea Pook / Annemarie and Fred Dolder-Vonder Mühl / Gene Dunaway / Bernie Edwards / Anne and Paul Ehrlich / Patricia and Mohamed El-Ashry / John Evans / Robert Ewing / David Fore / Rene L. Frey / Guillaume Froc / A. Michael Frothingham / Victoria Frothingham / Andreas Fuchs / Kazutoshi Fujihira / Samuel Gabanyi / Ader B. Gandhi / Janice Gendreau / Antoinetta Gelzer / Christiane Gelzer-Sarasin / Michael Gerber / David Gibson / Ross Gilbert / Lianna and Robert Gilman / Louis Ginsberg / Marius Glaser / Ursula Gloor-Roessiger / Rob Gray / Mathew Grimm / Gail and Richard Grossman / Yvonne and Christian Haener-Zuber / Elizabeth Hardy / Gary Wolff and Ruth Hartman / Alfred Hartmann-Eccles / Sandra Heidrich / Lamont and Marilyn Hempel / Anne T. Henny / Martin Hiller / Don Hodge / Alfred and Philipp Hoffmann / Jan Hoffmann / Christine Yee Ting Hwang / Roxana Letechipia Jolly / David M. Johns / Jan Juffermans / Julie Kennedy / Peter Kelterborn / Michael Kisel / Dominik Koechlin / Francis and David Korten / Stephen Kraemer / Barbara and Joseph Kresse / Sarosh Kumana / Lake Macquarie City Council /

Donations (continued)

(Received January 1, 2011 – December 31, 2011)

Harald Lamotte / Judith Landsberg / Louisa W. Leavitt / William Lidicker / Brett Lider / John Lombard / Balazs Magyar / Tamas Makray / Peter Martin / Chris Martiniak / Roland Matter / Manfred Max-Neef / David McCandless / Muriel McCallum / Ross McCluney / Mary and Carl McDaniel / Micheal McElwee / Terrence McNally / Charles McNeill / Don Miller / Julie and Mark Mills / Will Moffat / Foster Morrison / Georg von der Mühl / Daniel Muntwyler / Elizabeth Nelson / Paul Nelson / Monique and Gilles Nicollier-Serment / Kathleen Nolan / Edward Nold, Jr / Jorgen Nørgård / Tyler Norris Associates / Isabelle Van Notten and David Rosenberg / Jeanene J. O'Brien / Jan Ohlberger / Catherine and Bill Parrish / Paul Payten / Kaja Peterson / Roger Pritchard / Mike Prohoroff / Stefanie Pruegel / Rudy Ramp / Resource Engineering Group, Inc. / Colin Reynolds / Thomas Richle / Anne Robertson / Norman Robbins / Eugene Rosa / Malcolm Rosenberg / Jeanne and Richard Roy / Isabelle Van Notten and David Rosenberg / David Russell / Beat von Scarpatetti / Tom Schaefer / Jürg Schaufelberger / Cornelia Schefold-Albrecht / Peter Schiess / Christian Schlatter / Daniela Schlettwein-Gsell / Partizia and Martin Scholtysik / Anton Schwegler-Donat / Aletta Schubert-Vischer / Uwe Schubert / Peter Seidel / Gail and Pete Shoemaker / Toufiq Siddiqi / Carol and Hans-Peter Sigg / Micheal Simpson /

Steve Shull / Elin and Douglas Sloten / John Evans and David Smith / Society for Ethical Culture / Colin Soskolne / Elisabeth Staehelin / Dieter Steiner-Hamel / Tim Stok / Muriel Strand / Manuela Keller and Tobias Straumann / Ursula Stürmer-Wild and Ekkehard Stürmer / Dieter Stumpf-Sachs / Maureen Stubblefield / Dorothy Sulock / Irene Sury / Syngenta International AG / Dianne and David Theil / Bernard Thibault / Don Thompson / Johan Vanneste / Josep Vives-Rego / Mary and Terry Vogt / Peter Vonder Mühl / Steven Vromman / Dietrich Waack / Isabel Wade / Elizabeth Walker / Joe Walker / Joe Waller / Paul Wack / Bea and Oliver Wackernagel / Caroline Wackernagel / Frederick Wackernagel / Isabelle Wackernagel / Tobias Wackernagel / Marie-Christine Wackernagel-Burckhardt / Yumi Hoshino and Yoshihiko Wada / Steven Webb / Barbara E. Gengler and Randy S Weinberg / Nicola Westermeir / Robert Williams / Carole Wilmoth / Chris Whalley / Julia White / Searle Whitney / Jerelyn and Alexander Wilson / Ruth Hartman and Gary Wolff / David and Maggi Wooll / David Yount / Ann and Thomas Yuill / Erika Zambello / Dirk Zijp / Elfriede Zimmerman-Scheifele and Markus Zimmerman / Annegreth and Mathias Zimmerman-Martin / Sheng Zhao / Iris Zschokke / Ann and Hansruedi Zulliger

Who we are.

Staff and Affiliates.

Board of Directors **Susan Burns** Senior Vice President of Global Footprint Network. **Jamshyd Godrej** Chairman and Managing Director, Godrej & Boyce Mfg Co. Ltd. **H.E. Razan Khalifa Al Mubarak** Secretary General, Environment Agency – Abu Dhabi **Tony Long** Director, European Policy Office, WWF. **Louis de Montpelliér** Head of the Banking Department, Bank for International Settlements. **Michael Saalfeld** Energy entrepreneur, Hamburg, Germany and Hawaii, USA. **Mathis Wackernagel** Co-creator of the Ecological Footprint and President of Global Footprint Network. **Terry Vogt** Board Chair, Global Footprint Network and Managing Director, Terra Global Capital. **Emeritus:** **Kristin Cobble** Leadership and organizational development practitioner, President, Courion Group. **André Hoffmann** Swiss entrepreneur and investor. **Haroldo Mattos de Lemos** President of the Brazilian Committee for the United Nations Environment Programme and Professor of Environmental Engineering at the Federal University of Rio de Janeiro. **Eric Frothingham** Corporate attorney, business executive and part owner of Progressive Investment Management, a socially responsible investment firm. **John Balbach** Managing Partner of Cleantech Group. **Bob Doppelt** Executive Director of Resource Innovations and The Climate Leadership Initiative. **Elizabeth McNamee** radio producer and development consultant. **Cara Pike** Director, Social Capital Project, Earth Justice. **Ann Hancock** Executive Director, Sustainable Sonoma County and Campaign Coordinator, Skymetrics.

Science and Policy Advisory Council **Oscar Arias** Former President, Costa Rica **Lester Brown** Founder and President, Earth Policy Institute **Herman E. Daly** Intellectual Father of Ecological Economics **Fabio Feldmann** Former

Minister of Environment, São Paulo **Eric Garcetti** President, Los Angeles City Council **Stephen Groff** Vice President, Asian Development Bank, Southeast Asia/Pacific **Julia Marton-Lefèvre** Director General, IUCN **Manfred Max-Neef** Economist, recipient Right Livelihood Award **Michael Meacher** Former Minister of Environment, UK **Rhodri Morgan** Former Minister, Wales **Norman Myers** Leading environmental scientist **Daniel Pauly** Leading marine ecologist **Jorgen Randers** Former President, Norwegian School of Management **Peter Raven** Former President, AAAS **William E. Rees** Co-creator of the Ecological Footprint **Karl-Henrik Robèrt** Founder, The Natural Step **Emil Salim** Former Indonesian Minister of State **James Gustave Speth** Former Dean, Yale School of Forestry and Environmental Studies **Will Steffen** Executive Director, Australian National University, Climate Change Institute **David Suzuki** Award winning scientist and broadcaster **M.S. Swaminathan** India's leading scientist on sustainable food security **Ernst Ulrich von Weizsäcker** Founder, Wuppertal Institute **Dominique Voynet** Former Environment Minister, France **E.O. Wilson** Distinguished biologist, Harvard University

Staff Bree Barbeau / Michael Borucke / Nina Brooks / Susan Burns / Kristin Butler / Jill Connaway / Gemma Cranston, Ph.D. / Julie Curry / Emily Daniel / Yves de Soye / Gina DiTommaso / Tracy Doten / Faith Flanigan / Nicole Freeling / Alessandro Galli, Ph.D. / Kyle Gracey / Rachel Hodara / Katsunori Iha / Kristin Kane, Ph.D. / Kamila Kennedy / Joy Larson / Lisa Levy / Jennifer Mitchell / David Moore / Juan Carlos Morales, Ph.D. / Pati Poblete / Anders Reed / Mathis Wackernagel, Ph.D. / Robert Williams / Sebastian Winkler / Laura Yuenger

Research affiliates Willy De Backer / Steven Goldfinger, Ph.D. / Martin Kärcher Justin Kitzes / Bonnie McBain (née Lauck), Ph.D. / Dan Moran / Alfonso Peña / Yoshihiko Wada, Ph.D. / Paul Wermer, Ph.D.

Who we are.

Clients.

Government agencies Bavarian Environment Agency / City of Calgary / Deutsche Gesellschaft für Internationale Zusammenarbeit (GIZ) GmbH / US EPA Region 9 / European Commission / European Environment Agency (EEA) / ICLEI / Ministry of Environment of the Czech Republic / Munich Department of Health and Environment / Queretaro State Government / Sustainable Development Council of Luxembourg / Swiss Agency for Development and Cooperation / UNDP

Educational institutions American Institute of Architects – Utah / California College of the Arts / Center for Public Policy, India / Landesmuseum / Miami Science Museum / Pontifical Catholic University of Peru / Nagoya University / Science Links Japan / Tokyo University of Information Sciences / University of Otago

NGOs BioRegional Development Group / Ecolife / The Footprint Company / WWF China / WWF Colombia / WWF Hong Kong / WWF International / WWF Netherlands / WWF Switzerland / WWF Turkey

Corporations Bankhaus Lampe KG / Ingersoll Rand

Who we are.

Contributors.

Advice and services Alliance Member Services / Anders Reed / Anna Oursler / Bob Dinetz Design / Brian Shira / Brooking Gatewood / California Environmental Associates / Changing Our World / Compass Professional Development / Deanna Ani Karapetyan / Earth Policy Institute / Groundspring.org / Gwen Loeb / Hunza Graphics / IEA.org / Info Grafik, Inc. / ISPOT Interactive / Jennifer Mitchell / Jill Rosenblum Tidman / Justin Kitzes / Kell Partners / Lapis Group Inc. / Lithographix, Inc. / Maddox Design / Marz Consulting / MathWorks / Melissa Fondakowski / One L Productions / OnValues / Pablo Munoz / Patricia A. Wintroath, CPA / Pico Maderia MAG, LLC / Pongo Interactive / Cosmetto / Sandra Browne / Sarah Fisk / Savvy Tax, Inc. / Stuart Pivnick / Yoshiko Wada / Younossi Law / Yvonne Blake

Donated goods and services Cooley Godward Kronish LLP / Sarosh Kumana / Mary and Terry Vogt

Photo credits Roberto Bertero (pages 24-25) / Bonita Cooke (pages 70, IBC) / Bob Dinetz (pages 42-43) / Matt Eich (pages 4-5) / ©Albert González Farran – UNAMID (pages 8-9) / Efthymios Rafail Gourgouris (IFC, page 1) / Lynn Johnson (pages 38-39) / Stanislav Komogorov (pages 32-33) / Kris Krug (pages 46-47) / John Lee (cover) / Steve Ogle (pages 6-7) / Justin Stumberg (pages 2-3) / Pedro Ugarte (pages 10-11)

Financials

Year ending 2011

Consolidated for California, Geneva and Brussels offices.
All values shown in U.S. dollars.

Income & Expense by Program

| | Income | Expense |
|-----------------------------------------|------------------|------------------|
| National Accounts, Research & Standards | 222,442 | 451,575 |
| Client Services | 1,481,268 | 858,618 |
| Communications | 67,364 | 312,972 |
| Partnership | 103,100 | 57,146 |
| Fundraising | 835,485 | 276,917 |
| Administration | 11,059 | 354,026 |
| Allocations for Future Operations | – | 409,464 |
| Total | 2,720,718 | 2,720,718 |

Income & Expense by Category

Income

| | |
|-------------------------------------|-----------|
| Foundations | 1,766,867 |
| Fee for Services | 483,430 |
| Individual Contributions | 236,930 |
| Partnerships | 119,825 |
| Contributed Services & Materials | 52,681 |
| License Fees | 24,462 |
| Reimbursements for Project Expenses | 21,955 |
| Speaking Honoraria | 12,906 |
| Royalties | 1,662 |

Total Income

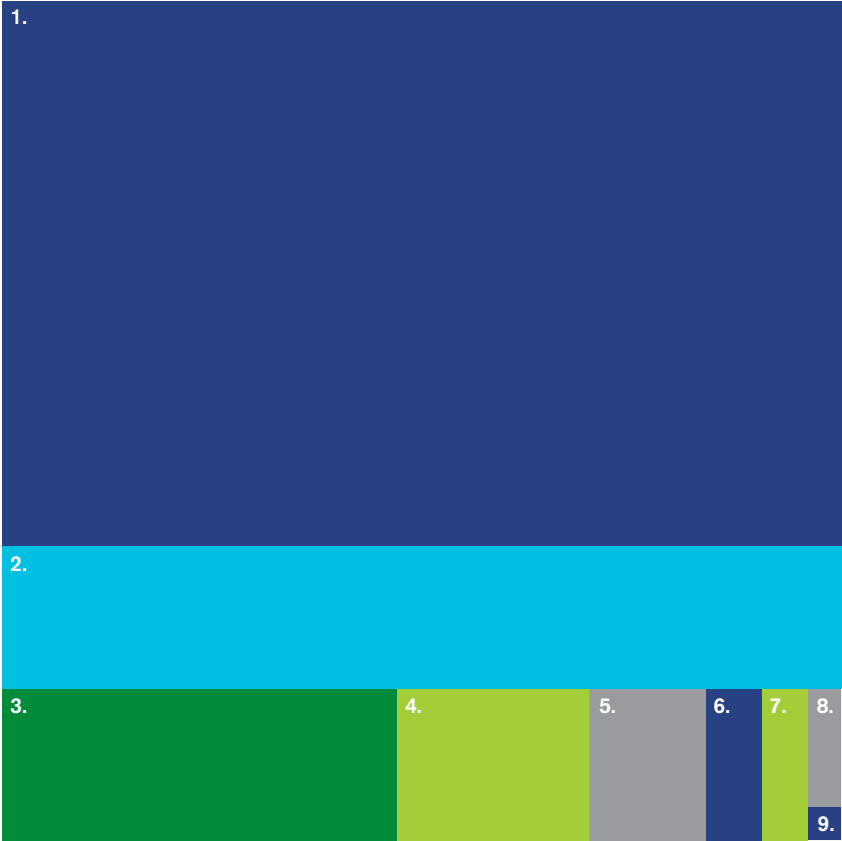
2,720,718

Expense

| | |
|-----------------------------------|-----------|
| Payroll & Personnel Expenses | 1,163,561 |
| Allocations for Future Operations | 409,464 |
| Direct Project Expenses | 355,075 |
| Operations | 334,263 |
| Professional Fees | 255,178 |
| Program Expenses | 128,762 |
| Computer-Related Expenses | 37,526 |
| Travel | 36,889 |

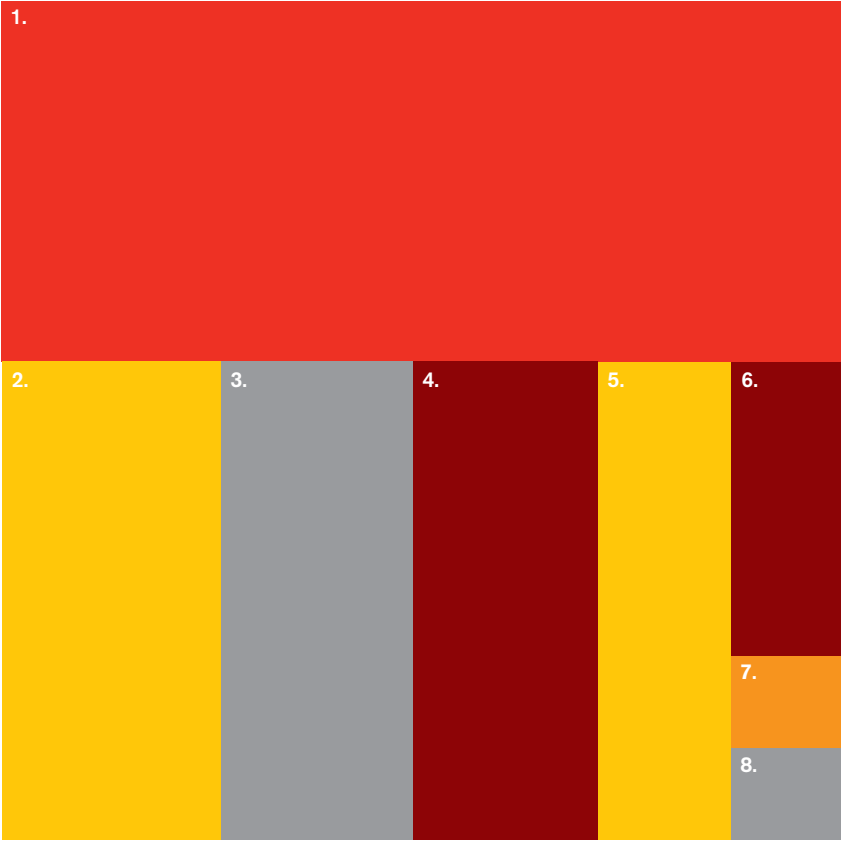
Total Expense

2,720,718



Income by Category / Total \$2,720,718

| | | | |
|-------------------------------------|-------------|----------------------------------------|----------|
| 1. Foundations | \$1,766,867 | 6. License Fees | \$24,462 |
| 2. Fee for Services | \$483,430 | 7. Reimbursements for Project Expenses | \$21,955 |
| 3. Individual Contributions | \$236,930 | 8. Speaking Honoraria | \$12,906 |
| 4. Partnerships | \$119,825 | 9. Royalties | \$1,662 |
| 5. Contributed Services & Materials | \$52,681 | | |



Expense by Category / Total \$2,720,718

| | | | |
|--------------------------------------|-------------|------------------------------|-----------|
| 1. Payroll & Personnel Expense | \$1,163,561 | 5. Professional Fees | \$255,178 |
| 2. Allocations for Future Operations | \$409,464 | 6. Program Expenses | \$128,762 |
| 3. Direct Project Expenses | \$355,075 | 7. Computer-Related Expenses | \$37,526 |
| 4. Operations | \$334,263 | 8. Travel | \$36,889 |

Working within
nature's budget builds
the foundation for
securing our future.

Design: Bob Dinietz Design





U.S. Office

312 Clay Street, Suite 300
Oakland, California 94607-3510 USA
+1-510-839-8879

Europe Offices

Brussels, Belgium
Geneva, Switzerland

For extra copies or requests, contact:

info@footprintnetwork.org

www.footprintnetwork.org

Printed on 100% recycled paper.