



Fig. 5: GLOBAL LIVING PLANET INDEX,
1970–2005

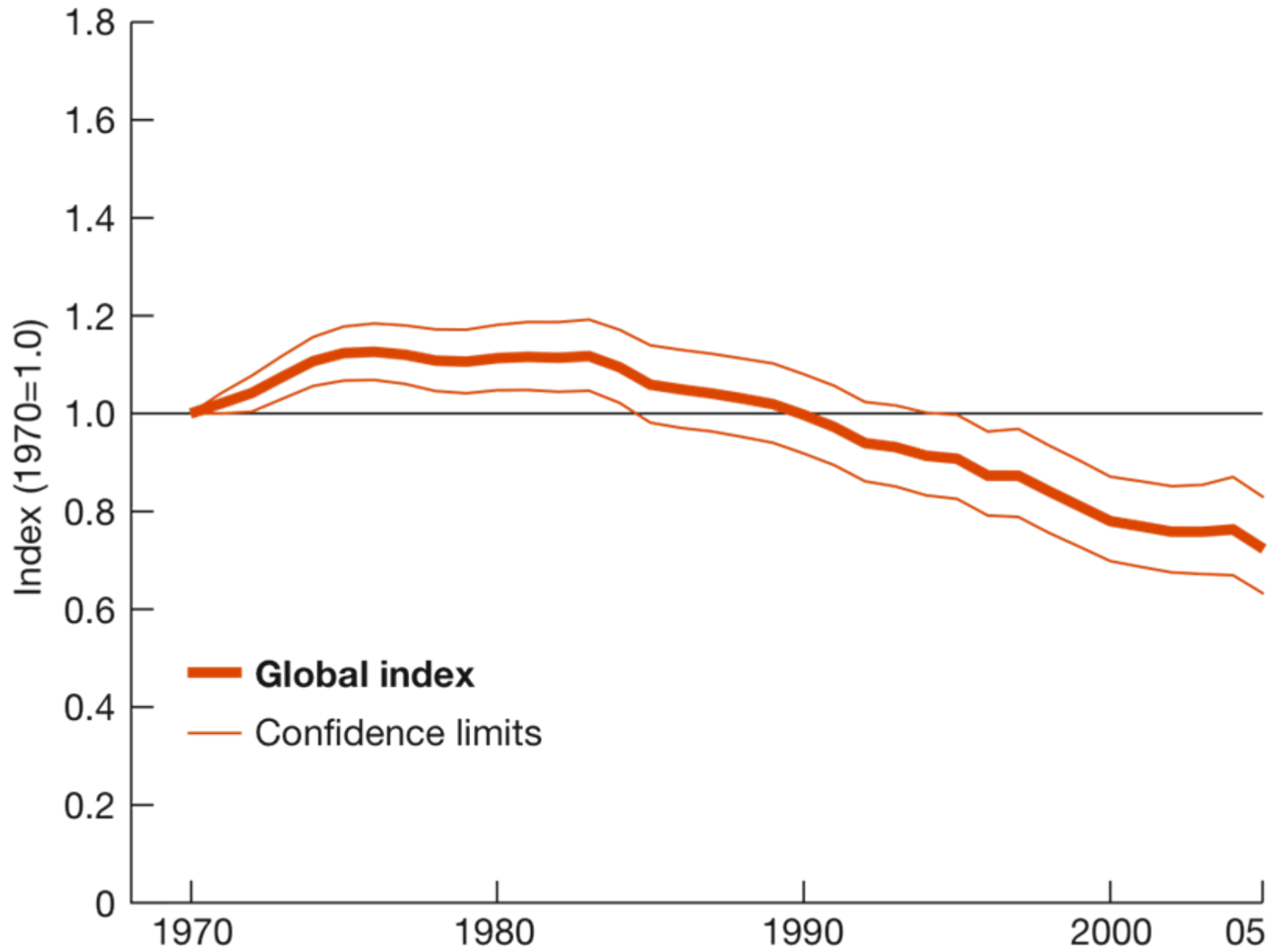


Fig. 6: TEMPERATE LIVING PLANET INDEX, 1970–2005

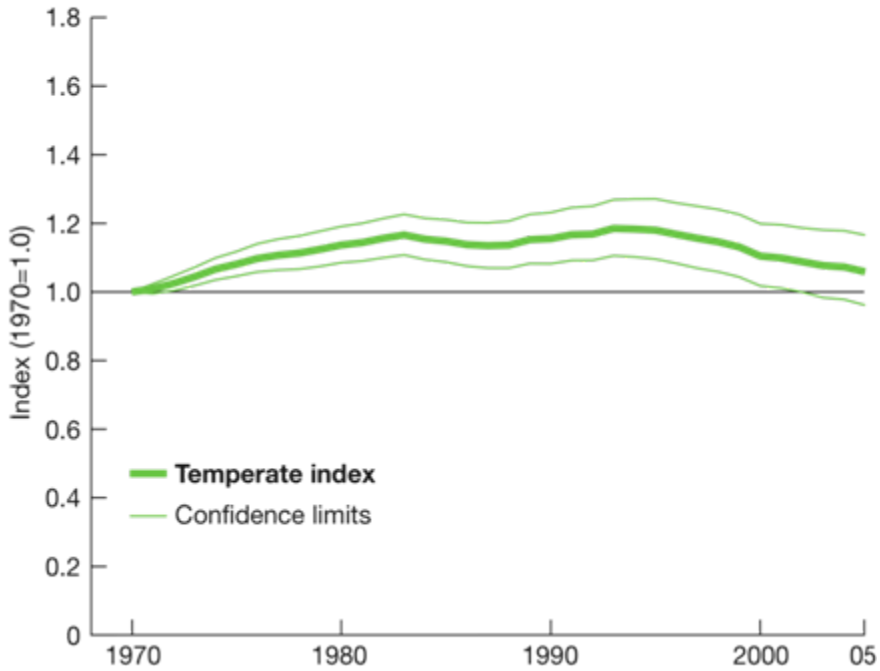
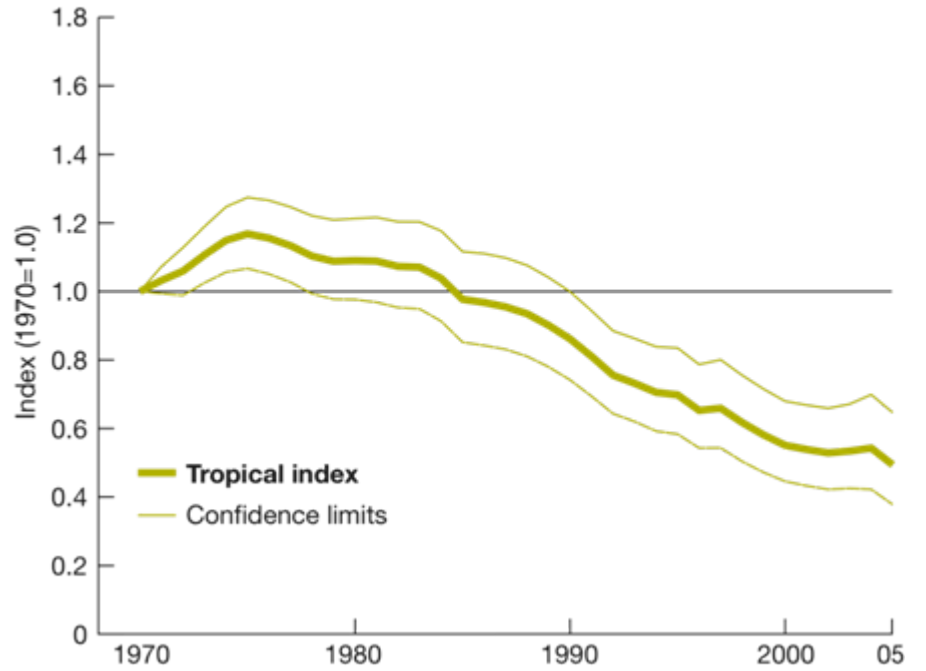
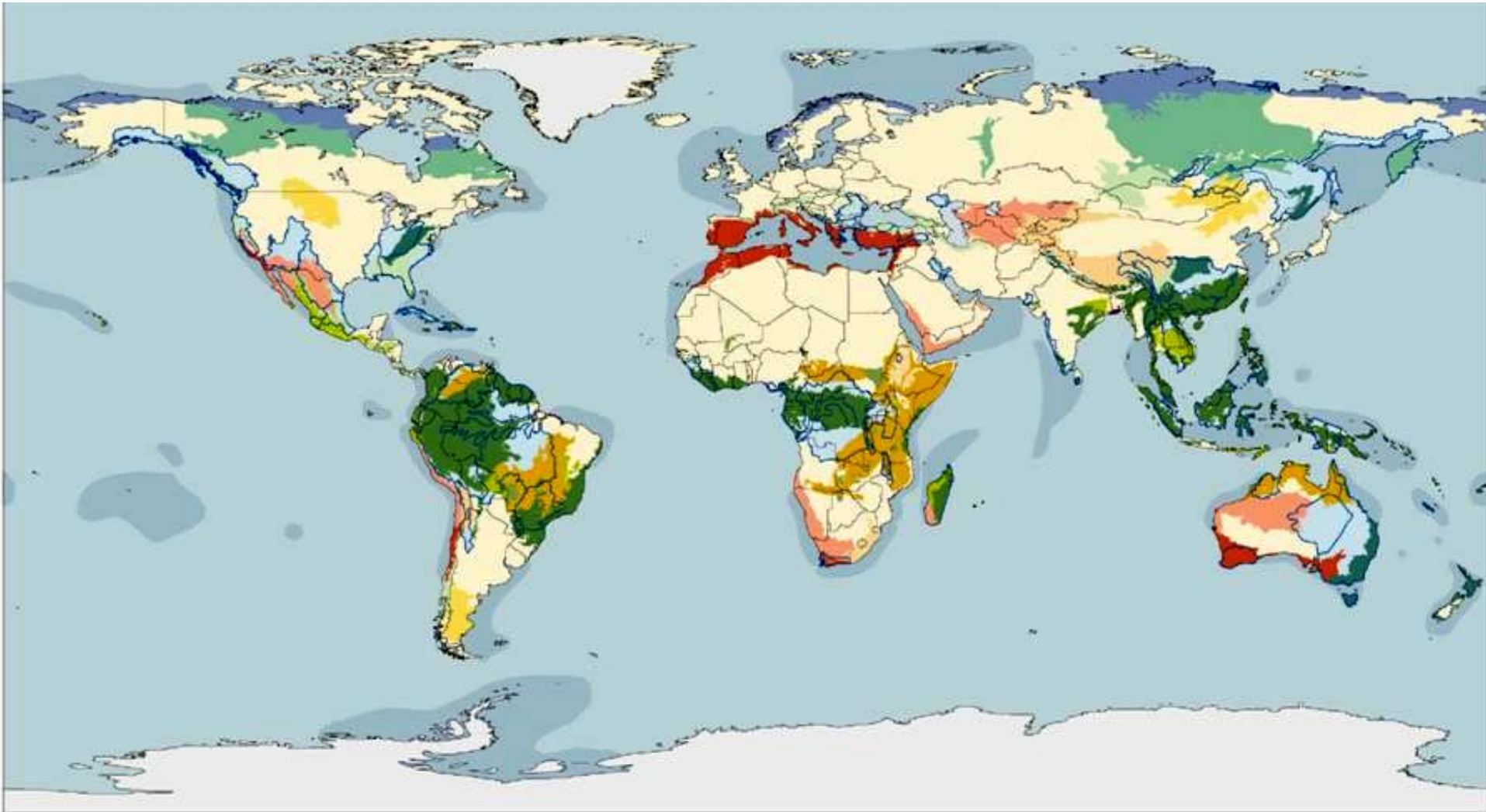


Fig. 7: TROPICAL LIVING PLANET INDEX, 1970–2005

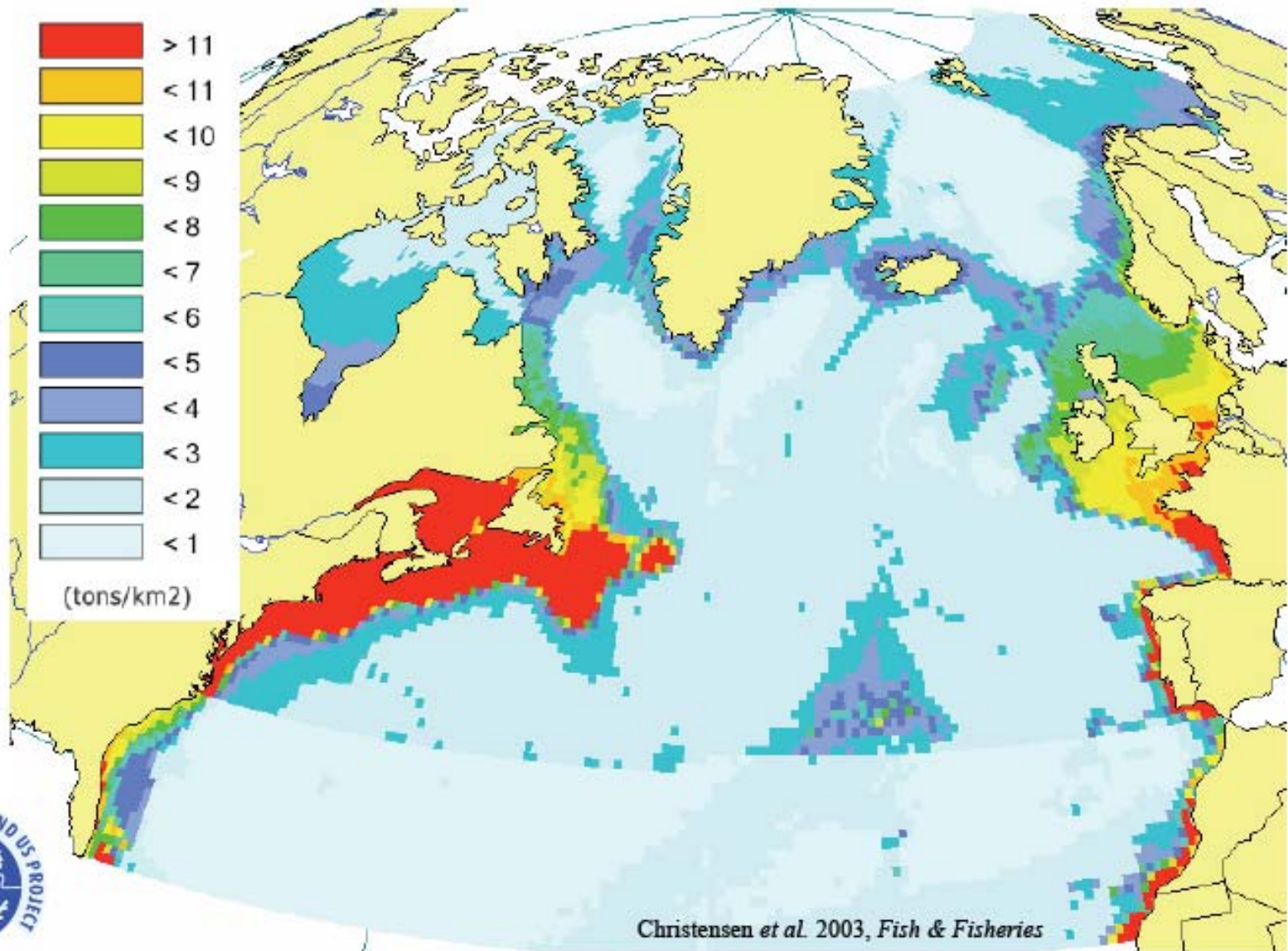




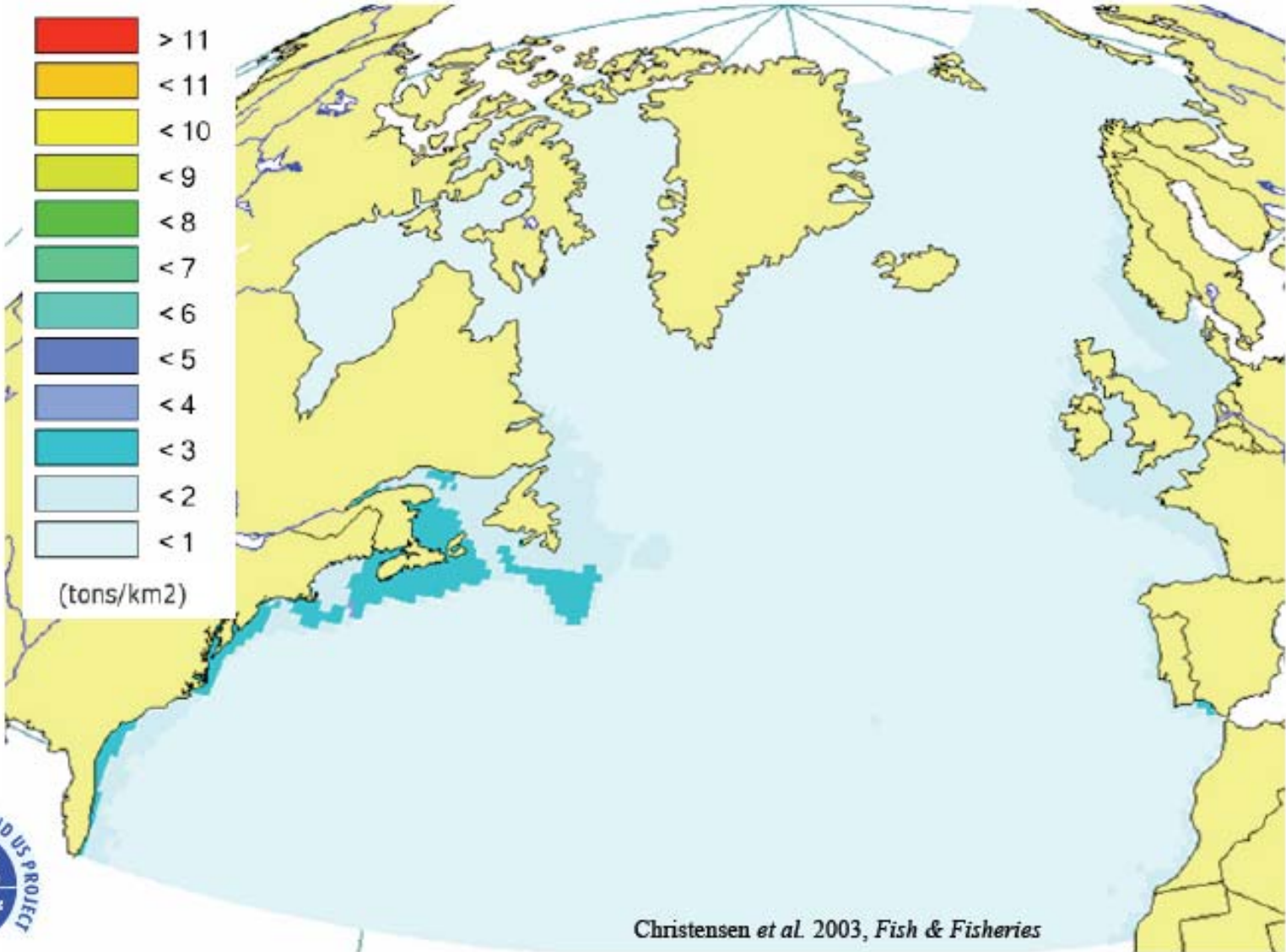
High Biodiversity

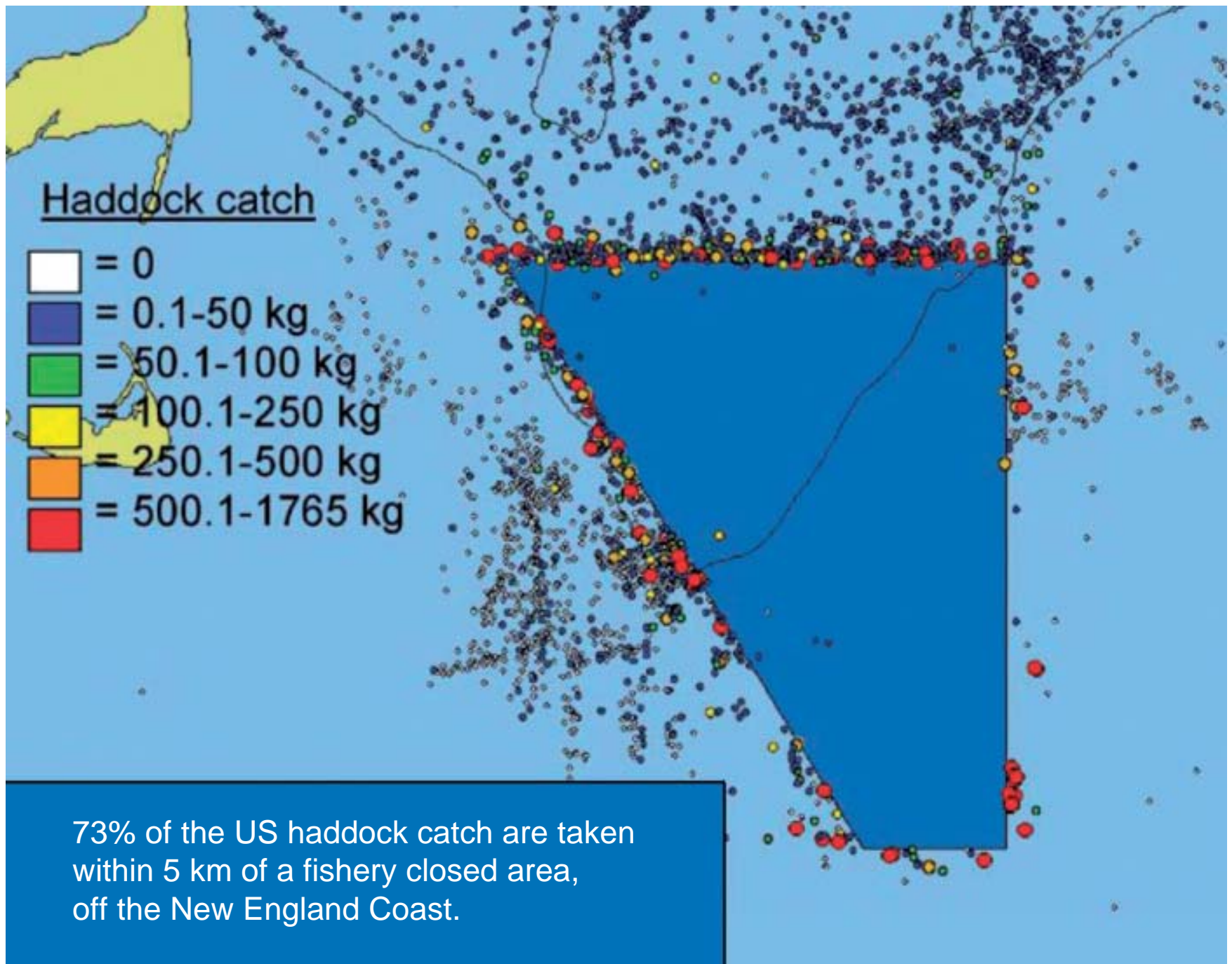


Biomass of table fish in 1900



and in 2000...









2010 International Year of Biodiversity