

FRANCE



| Indicator | Value (2008) | Value (1961) | Change (%) |
|--------------------------------------|--------------|--------------|------------|
| EF per capita [gha] | 4.91 | 3.48 | 41% |
| · EF Carbon | 2.24 | 1.30 | 73% |
| BC per capita [gha] | 2.99 | 2.54 | 18% |
| EC deficit per capita [gha] | 0.93 | 0.48 | 93% |
| · deficit Forest land | 1.96 | 0.87 | 127% |
| GNI per capita [constant 2000 \$US] | 23,708 | 7,624 | 211% |
| · fraction of world [billionths] | 0.59 | * 0.96 | -39% |
| GDP per capita [constant 2000 \$US] | 23,433 | 7,668 | 206% |
| Export earnings [constant 2000 \$US] | 6,968 | 616 | 1031% |
| Population ['000] | 64,188 | 47,230 | 36% |
| · 0 - 14 | 11,788 | 12,464 | -5% |
| · 15 - 64 | 41,799 | 29,238 | 43% |
| · > 64 | 10,601 | 5,529 | 92% |
| HDI | 0.879 | ** 0.777 | 13% |

* World ratio from 1970

** HDI value from 1980

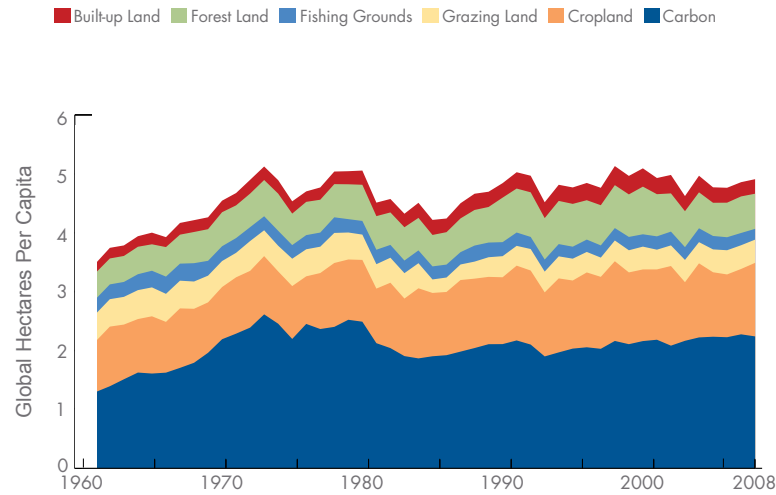


Figure FR-1: Ecological Footprint per capita in France by component, 1961-2008

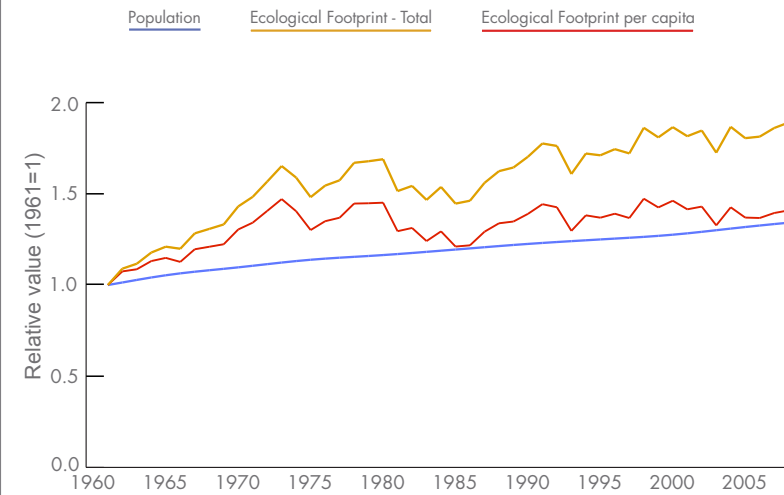


Figure FR-2: Contributing drivers of France's Ecological Footprint, 1961-2008

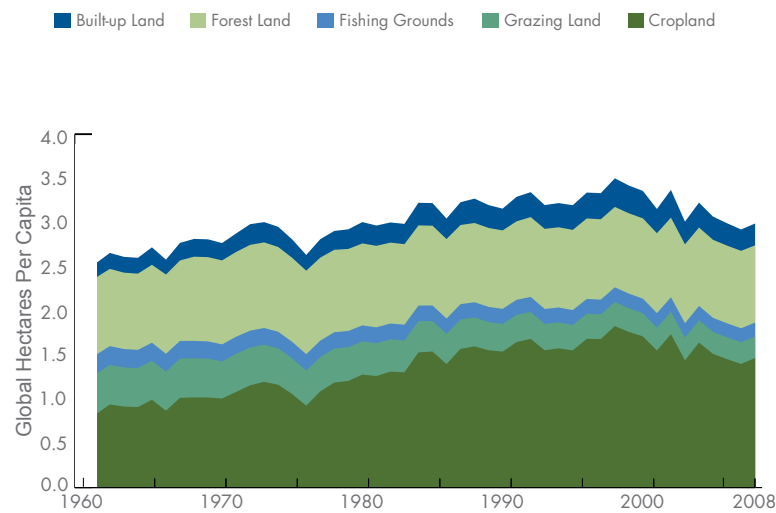


Figure FR-3: Biocapacity per capita in France by component 1961-2008

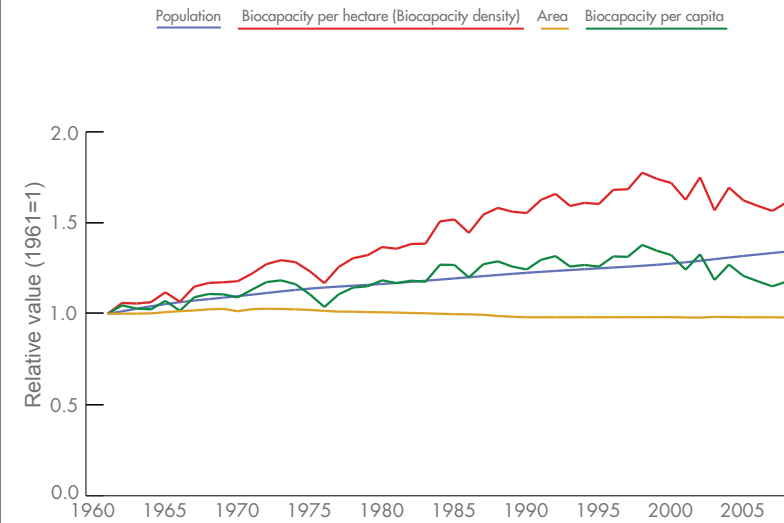


Figure FR-4: Contributing drivers of France's biocapacity, 1961-2008

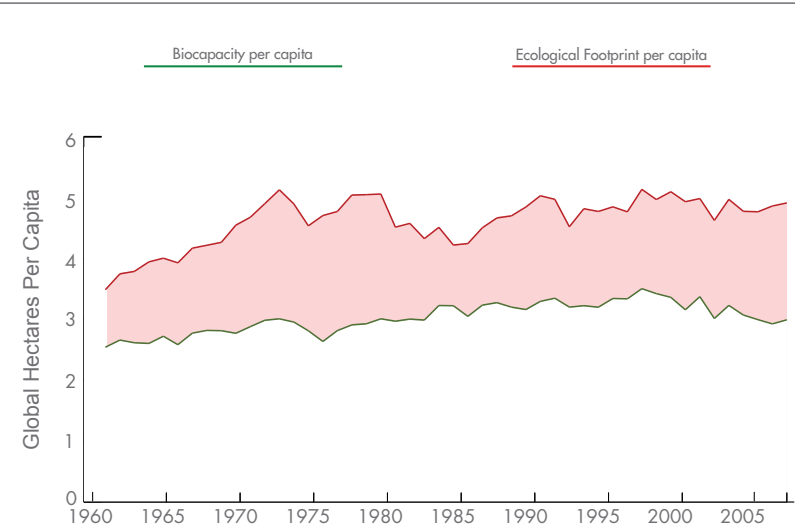


Figure FR-5: France's per capita ecological deficit, 1961-2008

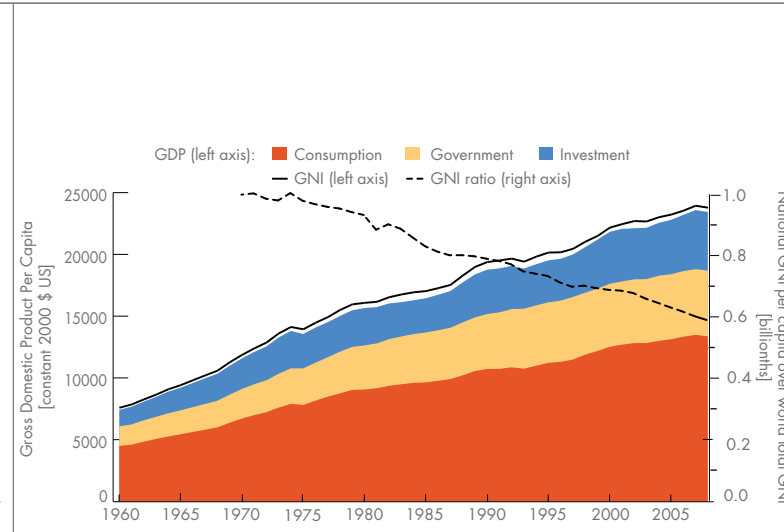


Figure FR-7: France's GDP by component, GNI, and ratio of national GNI per capita to world total GNI, 1961-2008

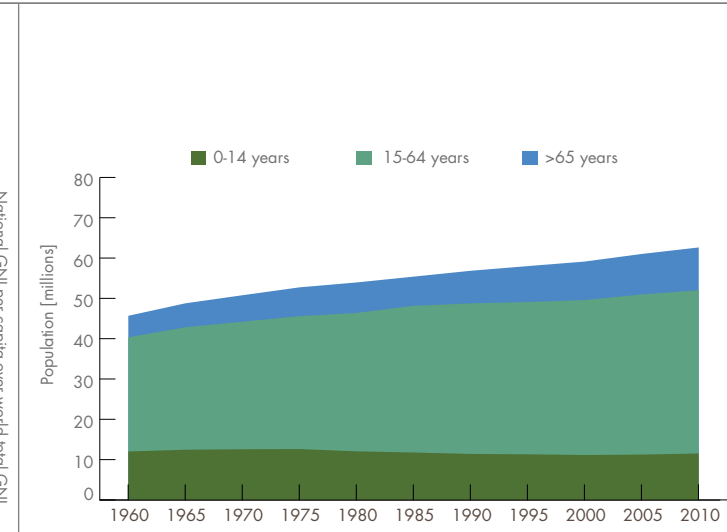


Figure FR-9: France's population by age group, 1961-2010

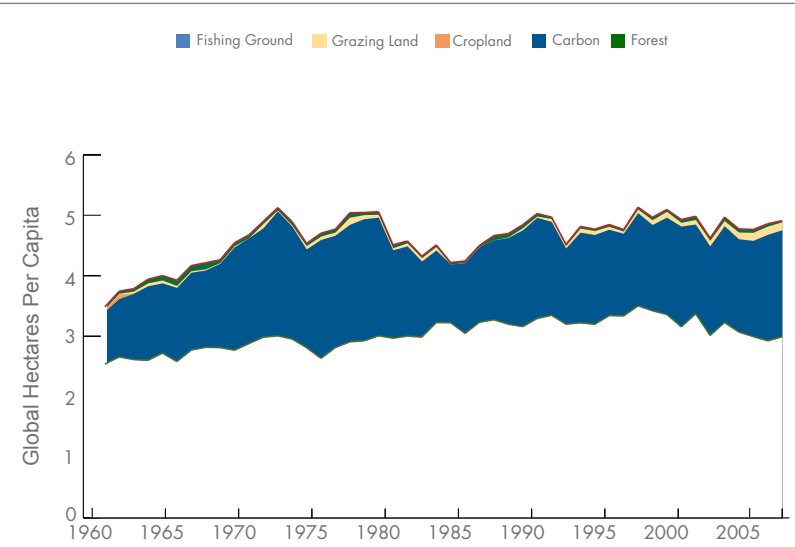


Figure FR-6: France's per capita ecological deficit by contributing land-use type, 1961-2008

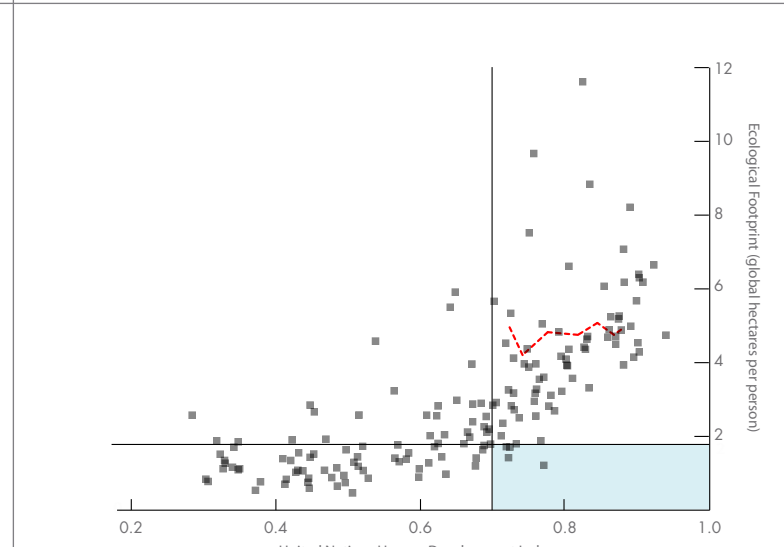


Figure FR-10: Ecological Footprint and HDI for all countries, with France's trend for 1980-2008

References:

Global Footprint Network (GFN), 2012. National Footprint Accounts 2011 Edition. Available at: www.footprintnetwork.org.

United Nations Development Programme (UNDP). 2011. Human Development Report 2011.

World Bank. 2012. World Development Indicators. Available at: data.worldbank.org